



Building Performance Equipment, Inc.®

Sustainable, Reliable, Energy Efficient, Ventilation Systems



BPE-SC-UNI-16000 Commercial Installation Specifications and Guidance

BPE Inc.
80 Broadway, Hillsdale, NJ

Phone: 201-722-1414
info@bpequip.com





Building Performance Equipment, Inc.®

Sustainable, Reliable, Energy Efficient, Ventilation Systems



At Building Performance Equipment Inc., we are committed to designing high-efficiency HVAC systems. With superior energy recovery at the heart of our current product line, we have raised the bar on ERVs that make a satisfying impact on your energy bill, health, and carbon footprint. This document is intended to illustrate the assembly of a commercial 16000 cfm ERV with necessary components and information provided. Please contact us at 201-722-1414 if you have any questions.



Building Performance Equipment, Inc.®

Sustainable, Reliable, Energy Efficient, Ventilation Systems



BPE self-contained unitary ventilation systems are tested during the manufacturing process before we carefully package them for shipping.

The control system has the following features:

Easy To Use — Setting changes can be made easily with the touch of a button.

Easy To See — Intuitive digital backlit display.

Customizable — Include individual air quality enhancements to your system with TrueIAQ™, or integrate them all as part of a total air quality system.

All-In-One — Manages humidification, dehumidification, ventilation and bathroom fans from a central point in your home.

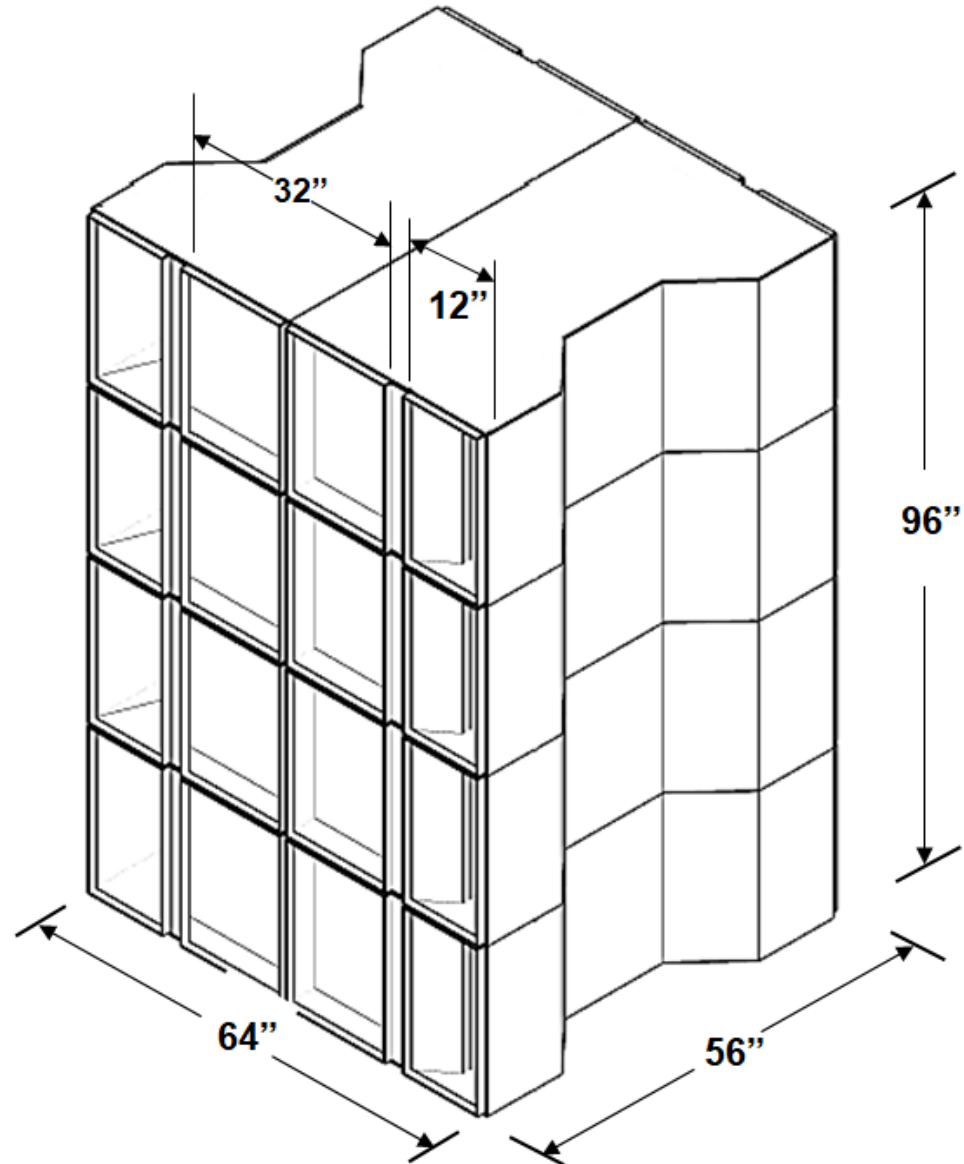
Smart Change/Check Reminders — Lets you know when to service or replace filters, UV bulbs and humidifier pads (based on actual run time).

Advanced Temperature and Humidity Sensing — Simultaneously displays both indoor and outdoor temperature and humidity levels on-screen. Automatically adjusts inside settings based on outdoor conditions.

BPE-SC-UNI-16000

Specifications

Model Number	BPE-XE-MIR 16000, Energy Recovery Ventilator (ERV)
Ventilation Type	Fixed Plate Polymer, Heat and Humidity Transfer
Typical Air Flow Range	5000 -16000 cfm
Thermal Efficiency	71% @ 7500 cfm 82% @ 5000 cfm
Product Weight/ Shipping Weight	1616 lbs./1750 lbs.
Shipping Dimensions	(8) 56" L x 24" W x 32.5" H
Typical Fan	CANARM 9218-VIB Inline Duct Blower (See page 8)

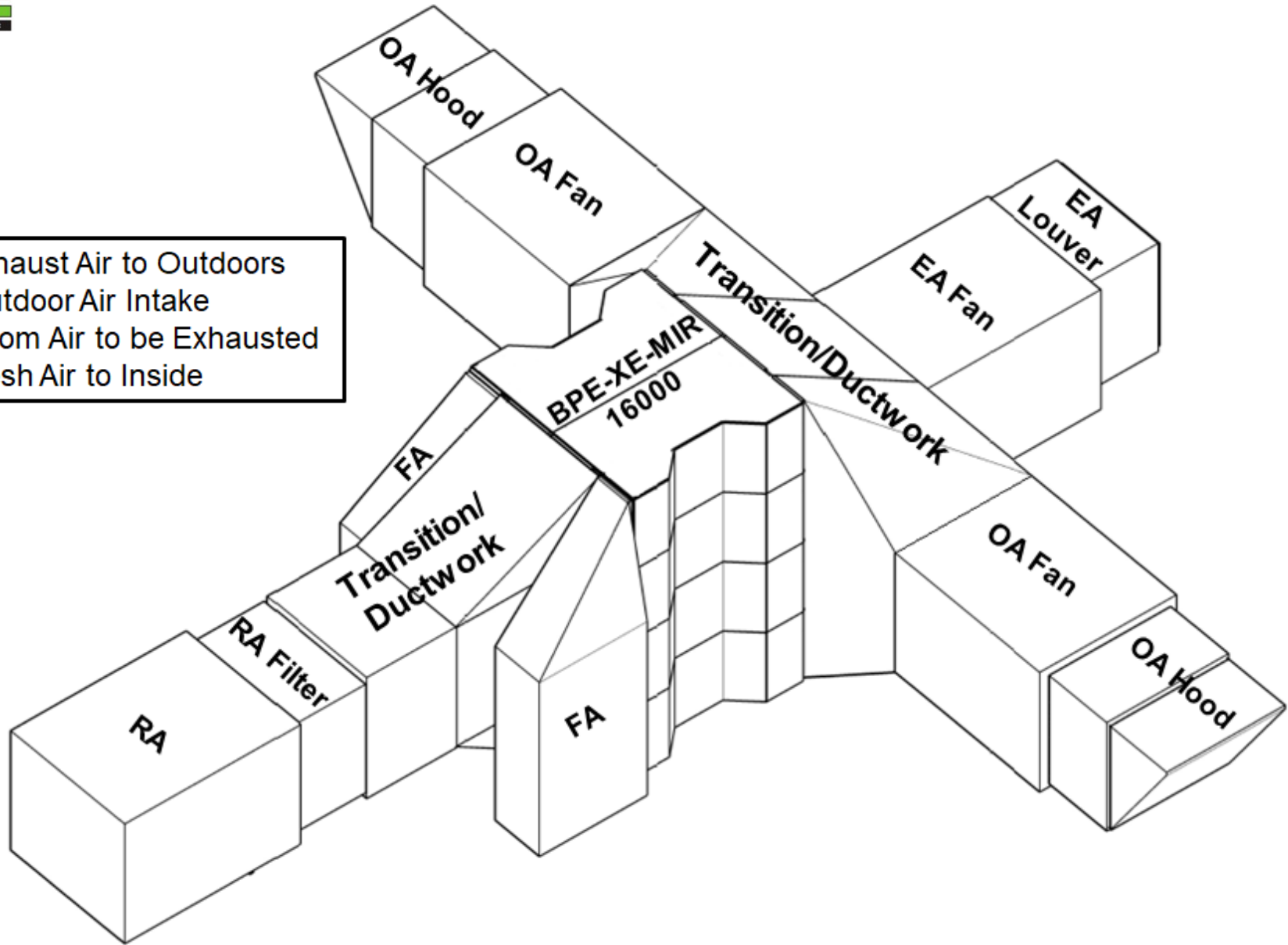


Note: Dimensions subject to change without notice



BPE-SC-UNI-16000 Layout

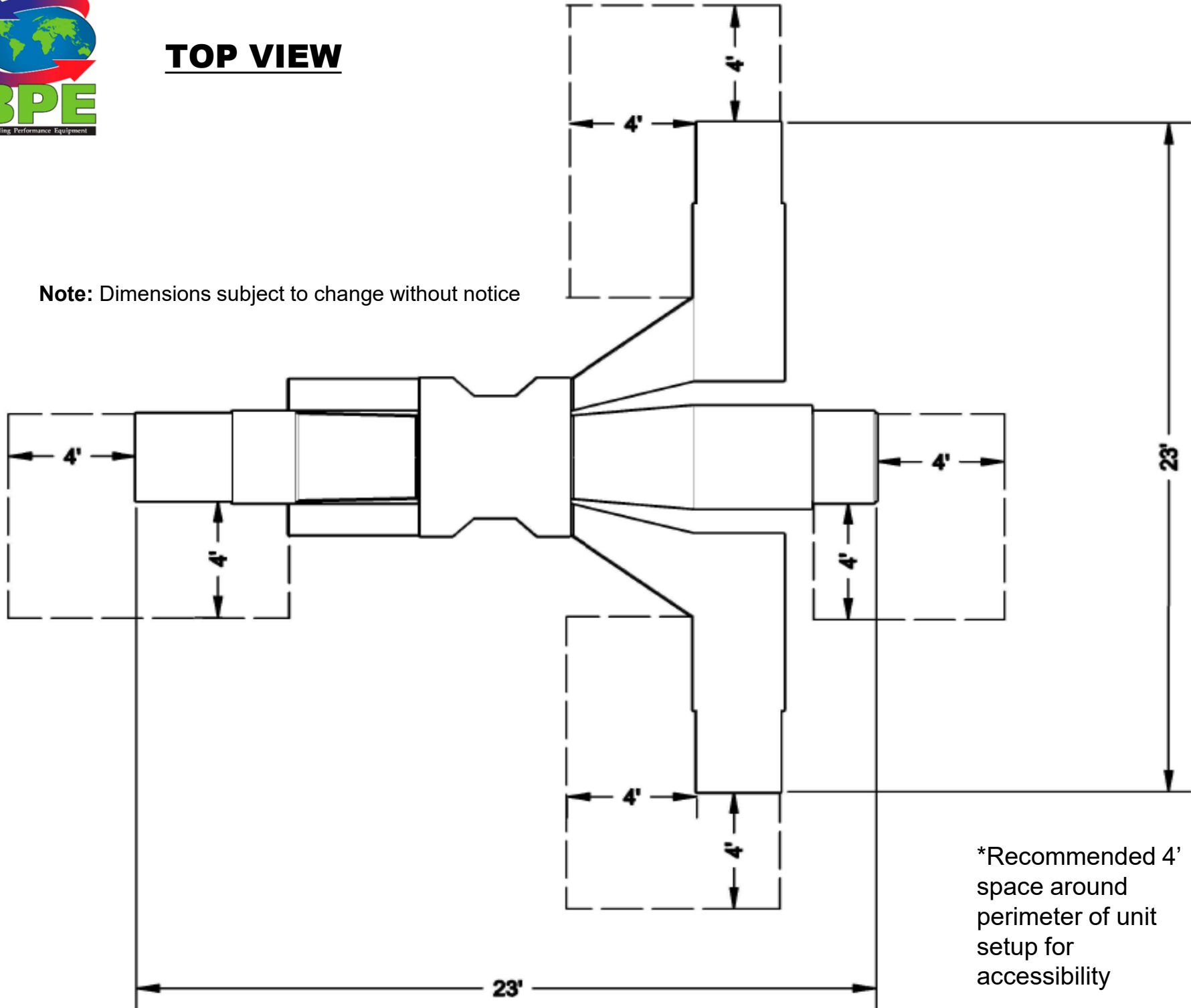
EA: Exhaust Air to Outdoors
OA: Outdoor Air Intake
RA: Room Air to be Exhausted
FA: Fresh Air to Inside





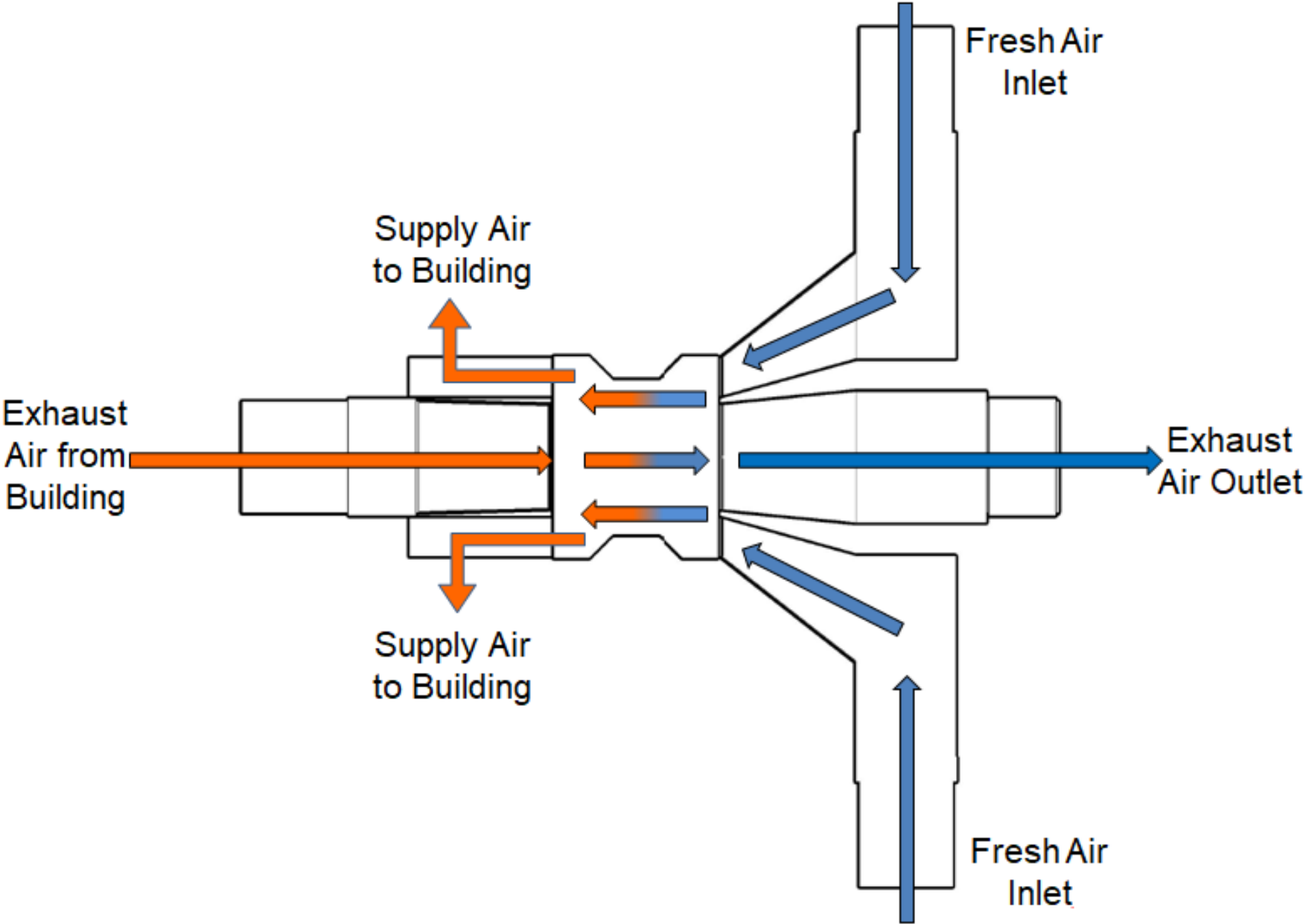
TOP VIEW

Note: Dimensions subject to change without notice



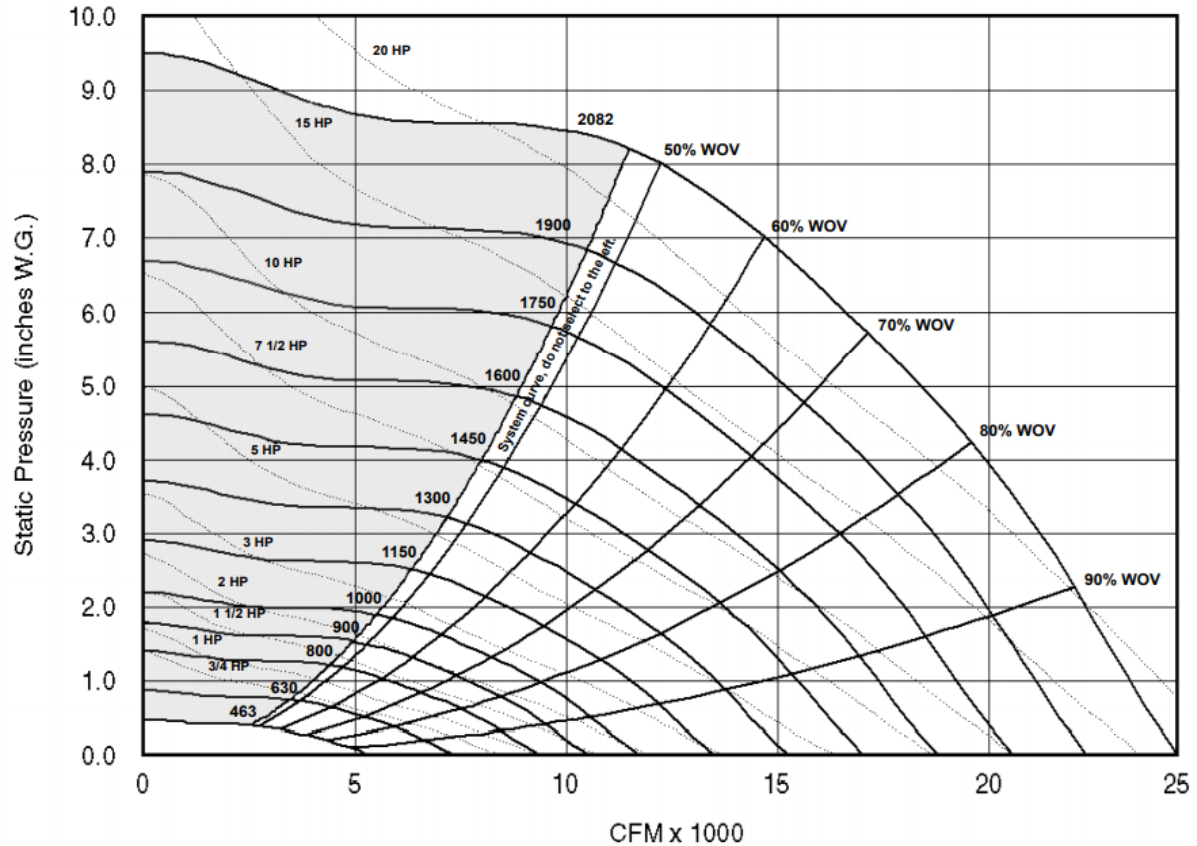
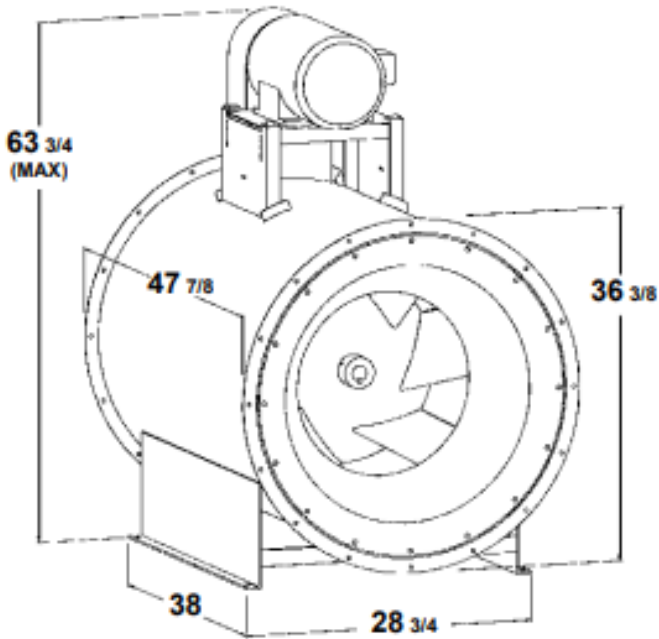
*Recommended 4' space around perimeter of unit setup for accessibility

BPE-SC-UNI-16000 Layout





Fan - Penn Barry ESI-270



Wheel Diameter = 30.00 in.	Maximum BHP = 2.66 (RPM/1000) ³
Outlet Area = 5.98 ft. ²	Max. Motor Frame Size = 326T
Tip Speed, FPM = 7.86 x RPM	

Class	Fan Weight (Lbs.)	Wheel Weight (Lbs.)	WR ² ① (Lbs. Ft. ²)	Max. Wheel RPM ^② (Steel or Aluminum)
I	482	81	52	1665
II	507	93	58	2082