



Building Performance Equipment, Inc.®

Sustainable, Reliable, Energy Efficient, Ventilation Systems



BPE-SC-UNI-4000 Commercial Installation Specifications and Guidance

BPE Inc.
80 Broadway, Hillsdale, NJ

Phone: 201-722-1414
info@bpequip.com





Building Performance Equipment, Inc.®

Sustainable, Reliable, Energy Efficient, Ventilation Systems



At Building Performance Equipment Inc., we are committed to designing high-efficiency HVAC systems. With superior energy recovery at the heart of our current product line, we have raised the bar on ERVs that make a satisfying impact on your energy bill, health, and carbon footprint. This document is intended to illustrate the assembly of a commercial 4000 cfm ERV with necessary components and information provided. Please contact us at 201-722-1414 if you have any questions.



Building Performance Equipment, Inc.®

Sustainable, Reliable, Energy Efficient, Ventilation Systems



BPE self-contained unitary ventilation systems are tested during the manufacturing process before we carefully package them for shipping.

The control system has the following features:

Easy To Use —
Setting changes can be made easily with the touch of a button.

Easy To See —
Intuitive digital backlit display.

Customizable —
Include individual air quality enhancements to your system with TrueIAQ™, or integrate them all as part of a total air quality system.



All-In-One — Manages humidification, dehumidification, ventilation and bathroom fans from a central point in your home.

Smart Change/Check Reminders —
Lets you know when to service or replace filters, UV bulbs and humidifier pads (based on actual run time).

Advanced Temperature and Humidity Sensing —
Simultaneously displays both indoor and outdoor temperature and humidity levels on-screen. Automatically adjusts inside settings based on outdoor conditions.

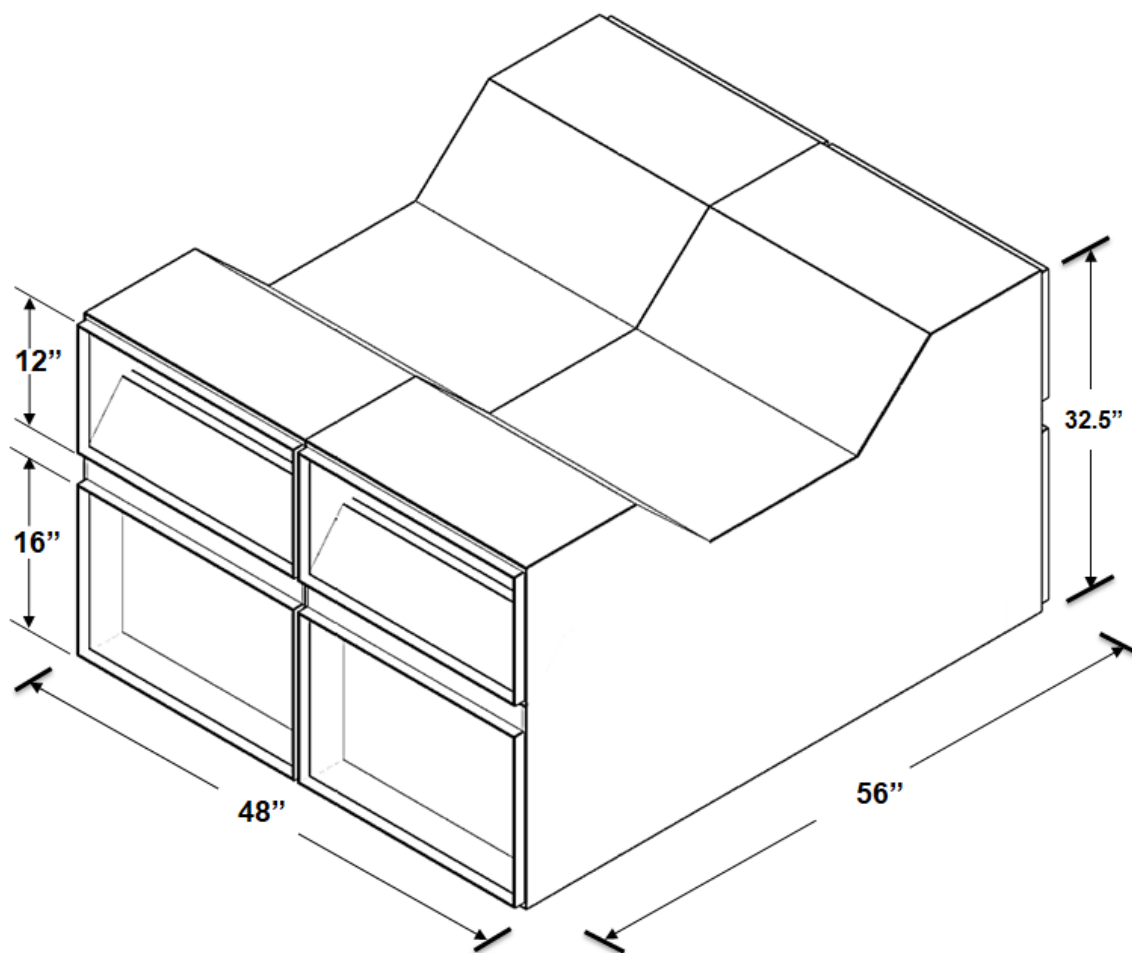


BPE-SC-UNI-4000

Specifications

Model Number	BPE-XE-MIR 4000, Energy Recovery Ventilator (ERV)
Ventilation Type	Fixed Plate Polymer, Heat and Humidity Transfer
Typical Air Flow Range	1000-4000 cfm
Thermal Efficiency	82% @ 2500 cfm 90% @ 1500 cfm
Product Weight/ Shipping Weight	404 lbs./444 lbs. Unit Height 32.5"
Shipping Dimensions	(2) 56" L x 24" W x 32.5" H
Typical Fan	CANARM 9215-VIB Inline Duct Blower (See page 8)

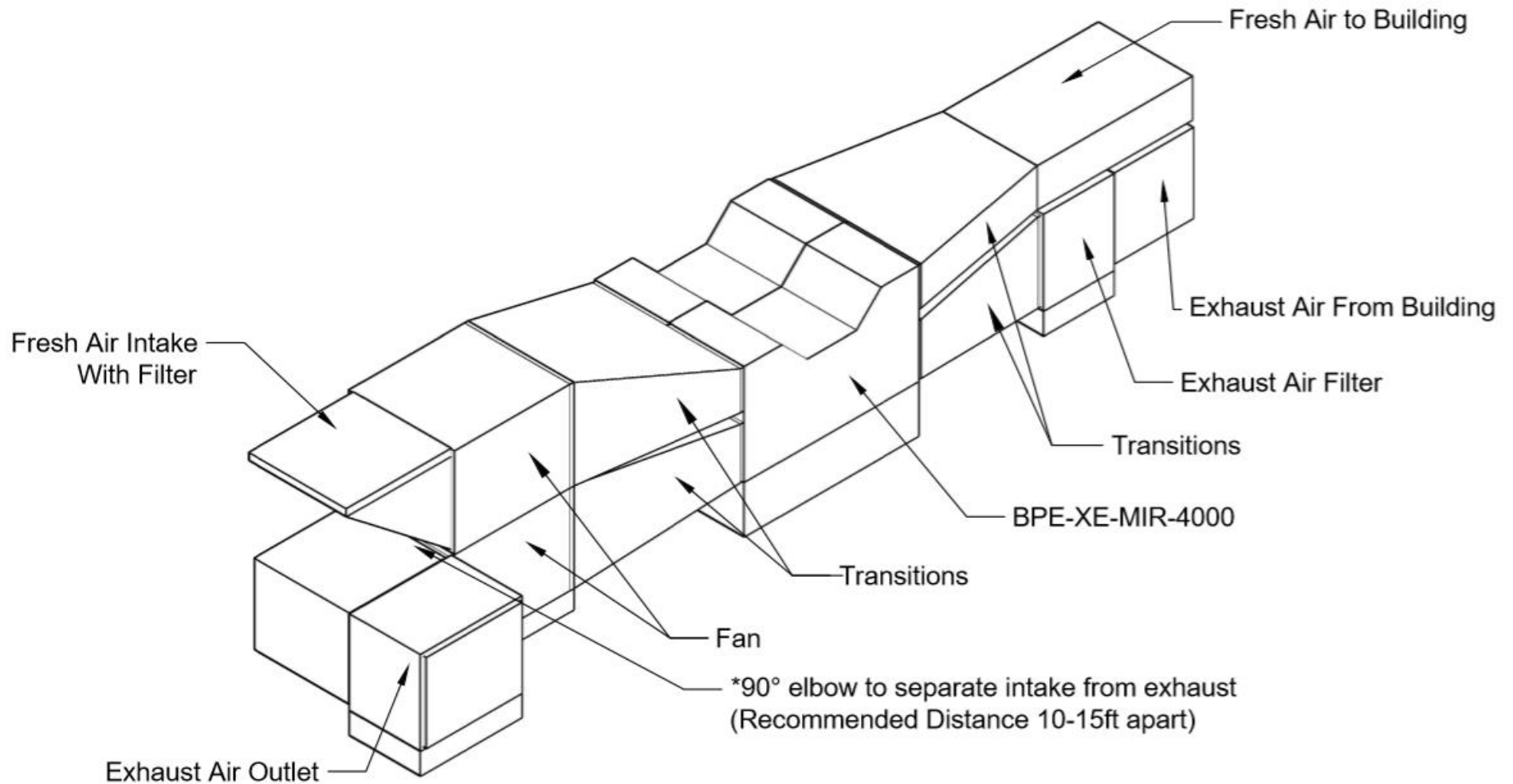
Note: Dimensions subject to change without notice



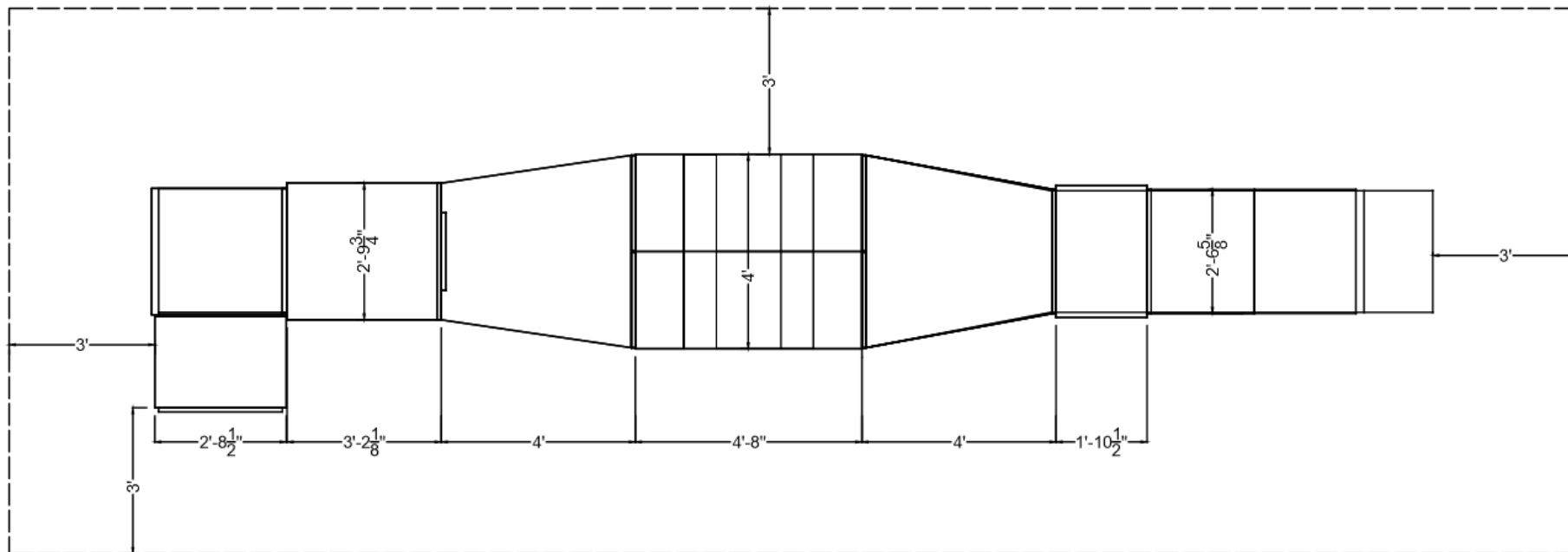


BPE-SC-UNI-4000

Layout



BPE-SC-UNI-4000 Layout

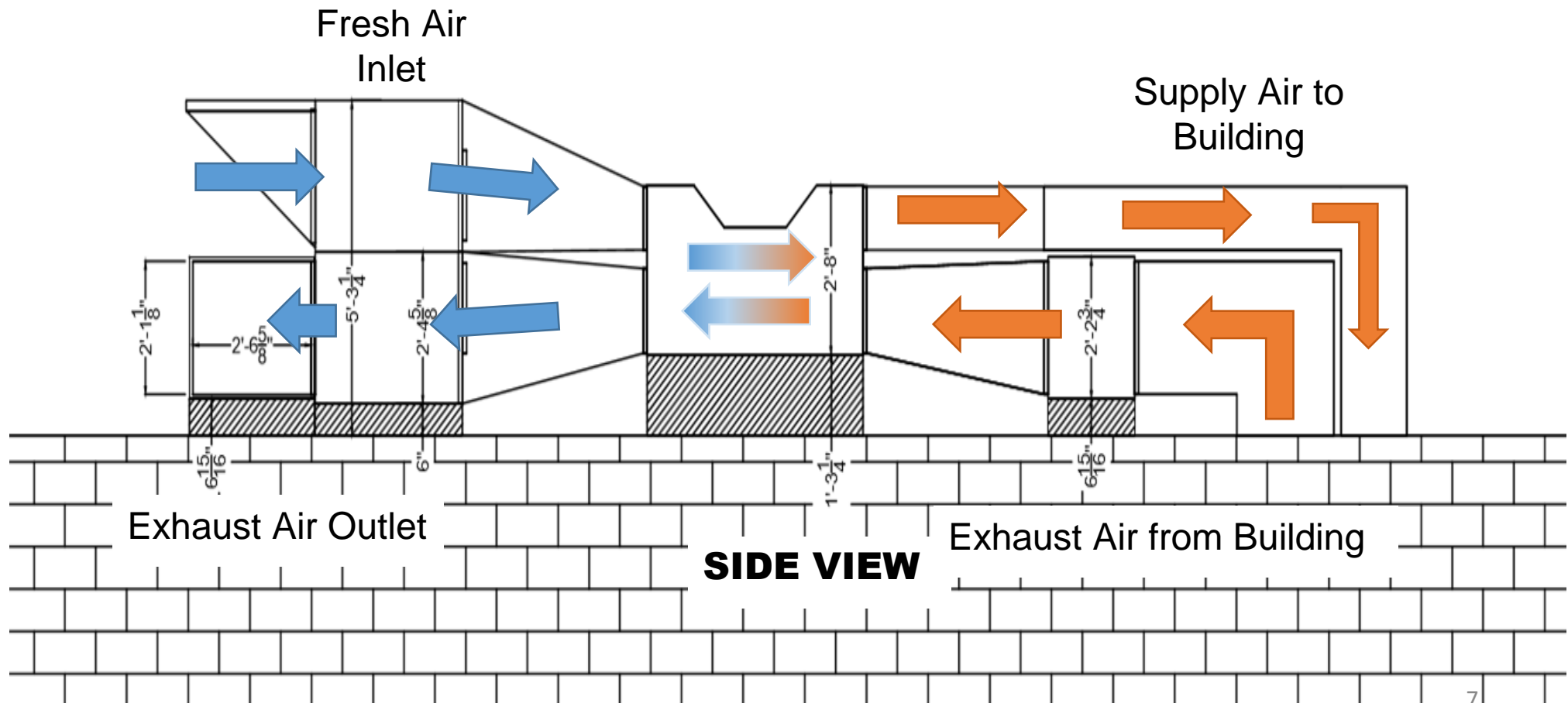


Note: Dimensions subject to change without notice

*Recommended 3'
space around
perimeter of unit
setup for
accessibility

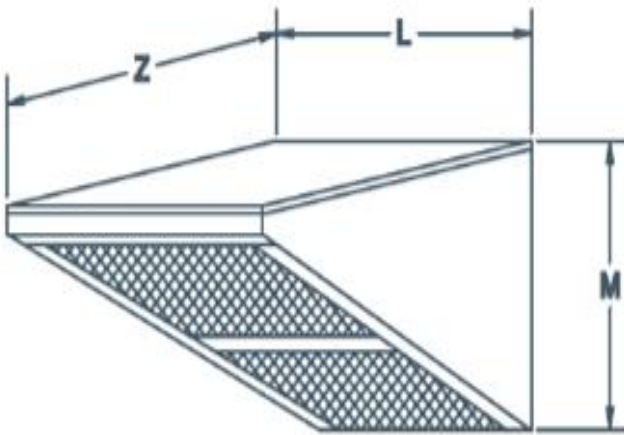
**TOP
VIEW**

BPE-SC-UNI-4000 Layout



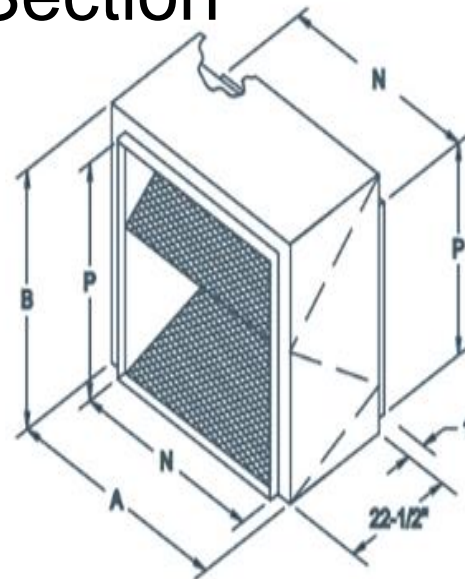
Intake Hood & Filter Selection

H9215 Intake



L	31 3/16"
M	25 13/16"
Z	33 1/2"

F9215A Filter Section



A	32 1/2"
B	26 3/4"
N	30 5/8"
P	25 1/8"

Fan Selection

Model Information

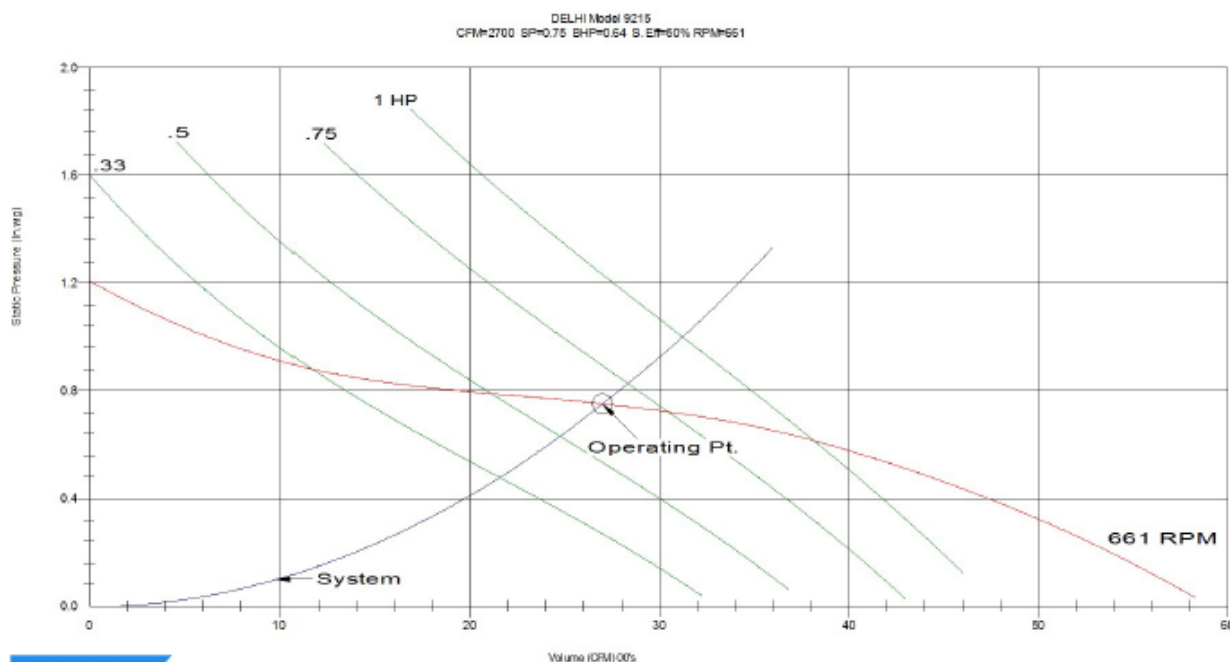
Model: 9215	Part Number: 9020036	
CFM: 2700	Shaft Diameter: 1	Unit Weight: 176
SP: 0.75	Wheel Diameter: 15.28	Ship Weight: 214
RPM: 661	Tip Speed: 2644 FPM	
BHP: 0.64	Static Efficiency: 50	Elevation: 0
	Outlet Velocity: 1165 FPM	Temperature: 70

Sound Data

Sound Power Level @
Frequency, re: 10⁻¹² Watts

63	125	250	500	1000	2000	4000	8000	(Hz)	LwA: 70
78	79	73	65	61	59	56	50	(dB)	SONES: 10.1
Ducted inlet <u>or</u> ducted outlet dBA @5 ft. 59					Ducted inlet <u>and</u> ducted outlet dBA @5 ft. 39				

Performance Curve



Note: Fan supplier subject to change by BPE without notice

Fan Selection

Drive Information

Motor Pulley 8400 x 5/8" \ 8500036	Turns Open 2.5	Blower Pulley MBL107 \ 8500007	Bushing H x 1 \ 8500063	Belt B59 \ 8200059
---------------------------------------	-------------------	-----------------------------------	----------------------------	-----------------------

Motor Data

Motor HP and Type 1 ODP	Volts/Phase 115/208-230/1 Phase	Frame 56	Motor RPM 1725	Position 1	Canarm Part Number 1MD114
----------------------------	------------------------------------	-------------	-------------------	---------------	------------------------------

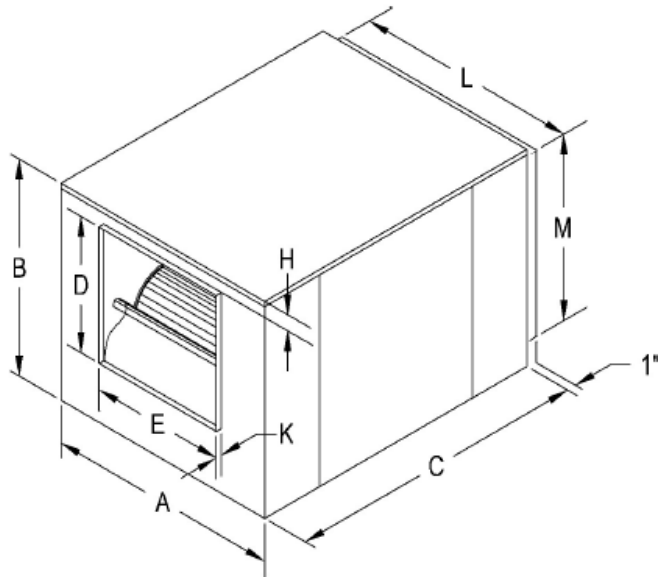
Options

IH-F Filtered Intake Hood

Dimensions

Model: 9215

(Inches)



<u>A</u>	<u>B</u>	<u>C</u>	<u>D</u>	<u>E</u>	<u>H</u>	<u>K</u>	<u>L</u>	<u>M</u>
33.75	28.625	38.125	17.0	19.625	2.125	1.125	30.625	25.25

Standard Features

9200 Series Duct Blowers (In-line Cabinet Fans)

- Forward curved wheel provides quiet, low rpm operation.
- Cabinet is galvanized steel for outdoor use.
- Baked on textured green polyethylene powder coat finish.
- Fiberglass insulation reduces noise, condensation, and energy costs.
- Self aligning Pillow Block Bearings.
- Access panels for convenient motor mounting on either side.

Note: Fan supplier subject to change by BPE without notice